

## THE IMPORTANCE OF ANIMAL BREEDING AND GENETIC RESOURCES TO IMPROVE ANIMAL PRODUCTIVITIES IN THE SOUTH EAST ASIAN REGION

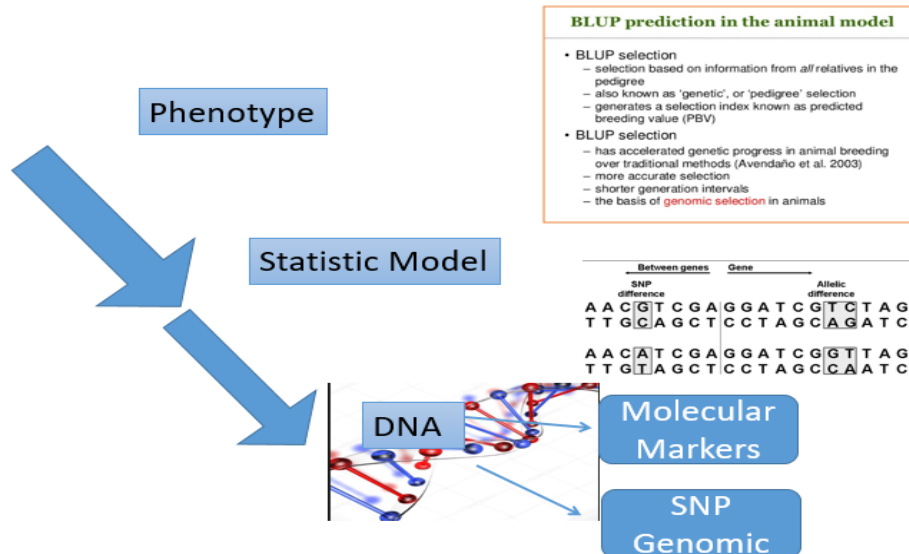
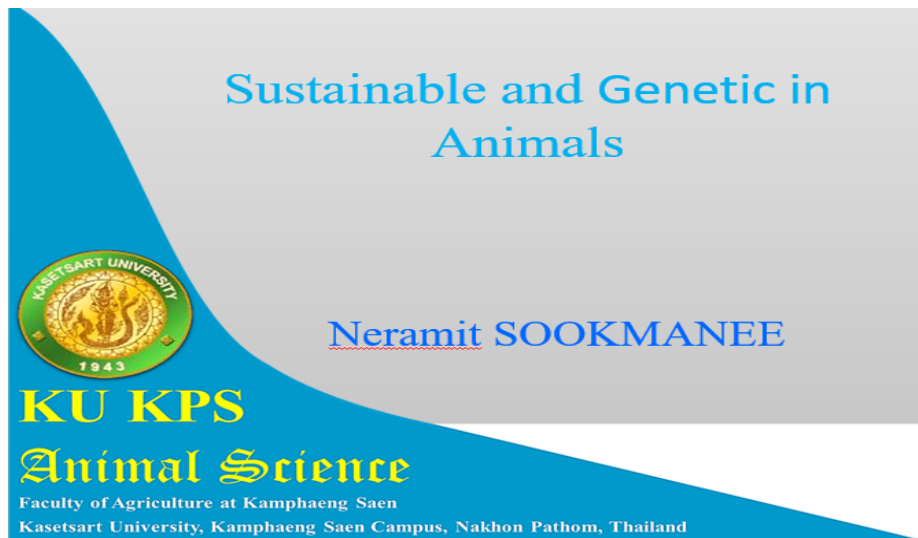
Neramit Sookmanee

Keynote Speaker

Kasetsart University, Thailand

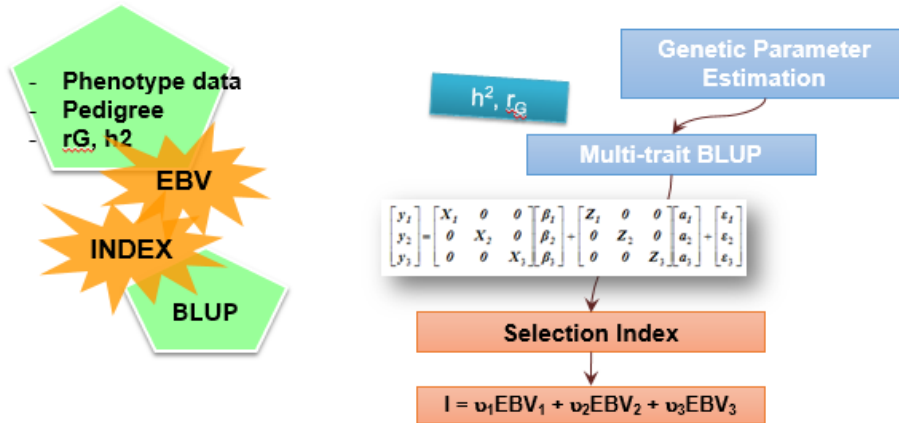
Corresponding Author Email: sookmanee@yahoo.com

Abstrak. Tidak ada abstrak

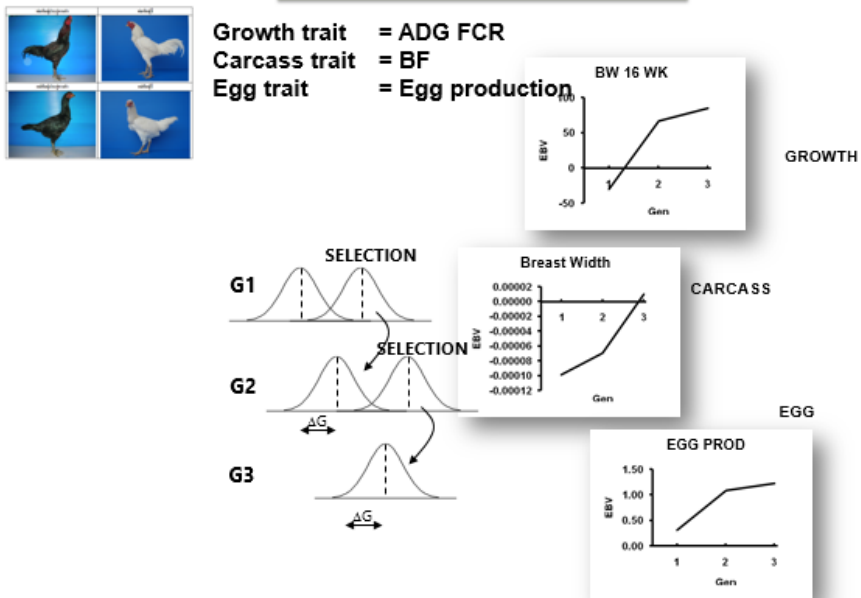


$$LH \begin{bmatrix} \hat{b} \\ \hat{u} \end{bmatrix} = RH \quad \text{with solutions} \quad \begin{bmatrix} \hat{b} \\ \hat{u} \end{bmatrix} = LH^{-1} RH$$

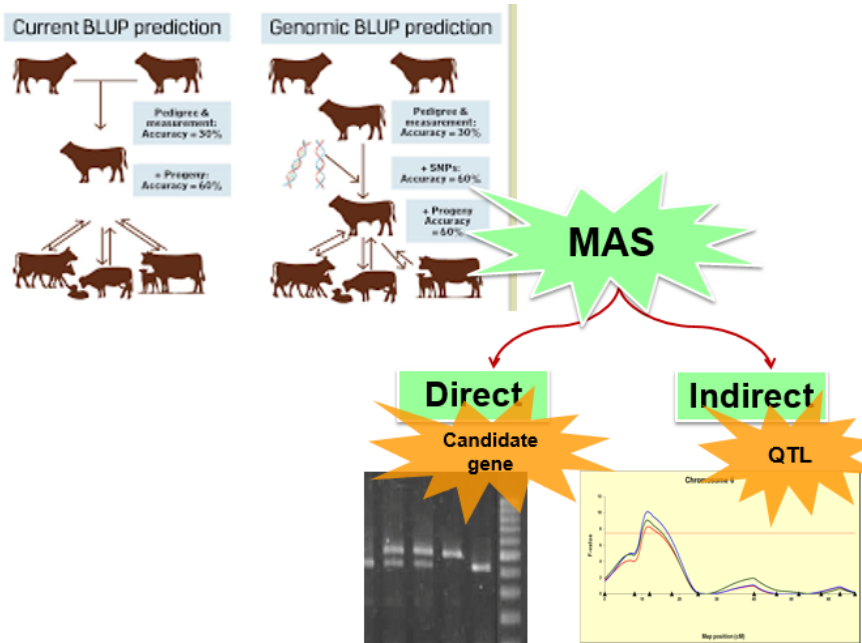
7	0	2	5	79	→	$\begin{bmatrix} \hat{b} \\ \hat{u} \end{bmatrix} =$	=	$\begin{bmatrix} \text{farm A} \\ \text{farm B} \\ \text{sire 1} \\ \text{sire 2} \end{bmatrix}$	=	$\begin{bmatrix} 10.40 \\ 16.83 \\ 11.56 \\ 15.68 \end{bmatrix}$
0	6	3	3	101						
2	3	5	0	61						
5	3	0	8	119						



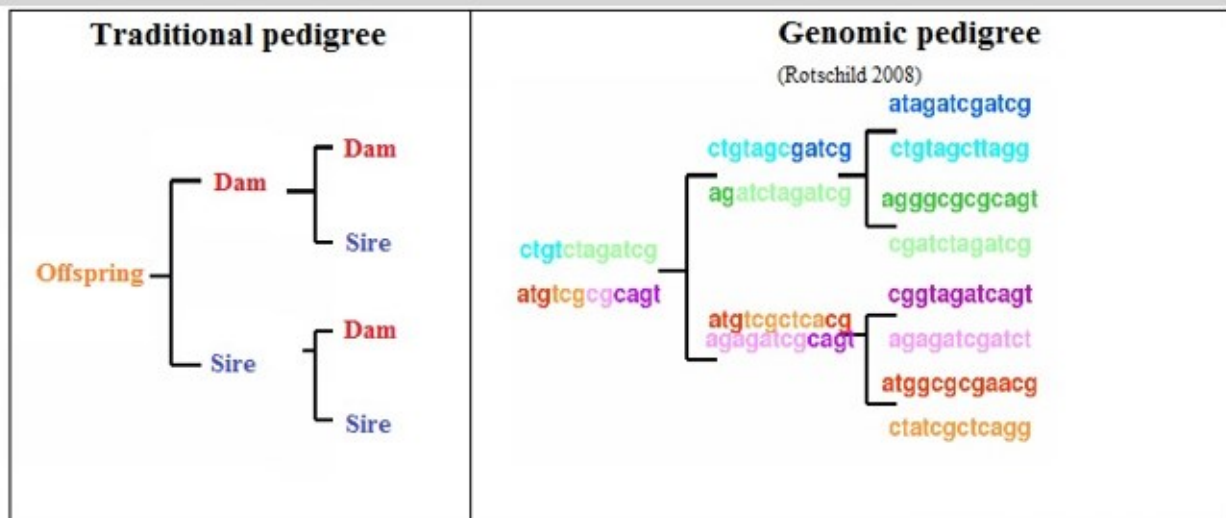
Accelerate Selection Response



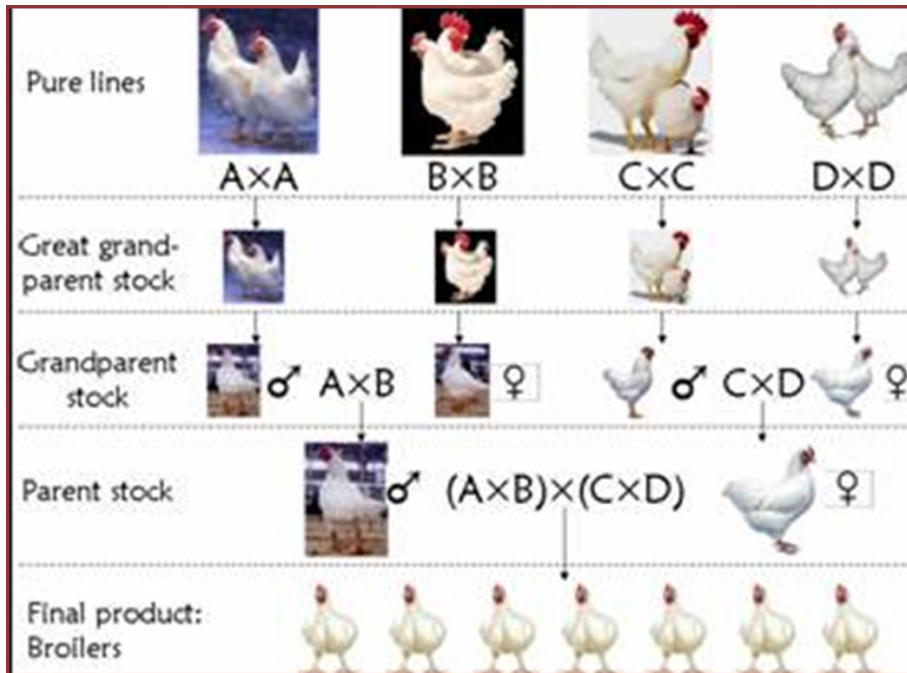
Source: Monchai KKU



## Genomic Pedigree



### PRODUCING COMMERCIAL CHICKEN



### Thailand Native Chickens



# Thai Ducks



**Kabinburi Muscovy**



**Yi-Liang Duck**



**Nakhon Pathom Laying Duck**



**Tha Pra Muscovy**

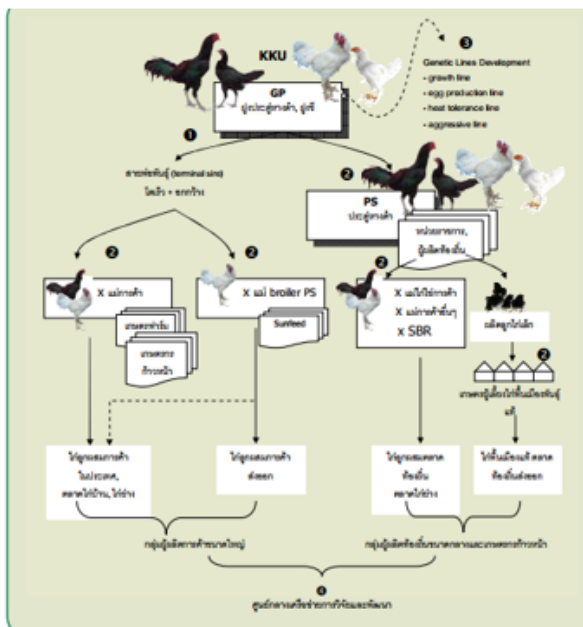


**Pak Nam Laying Duck**



**Khaki Campbell**  
Source: DLD

## Research and Development Network Center for Animal Breeding (Native Chicken)



- Develop Thai native chicken evaluated by selection index emphasized on growth performance with no impact on egg production.